

33 | 34
4 | 3

N 89° 49' W
1523.5'

Sta. 209+118

Sta. 208+00

Sta. 205+00

Sta. 193+00

Sta. 191+54.6

Sta. 190+77.0

Sta. 188+00

Sta. 184+00

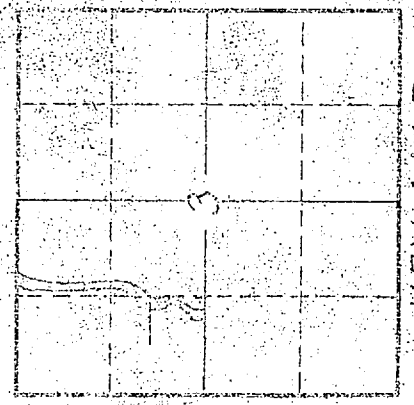
Sta. 183+21.4 Ah.
Sta. 173+00.4 Bk

N 89° 43' E
982.5'

W⁴ Cor. Sec. 3

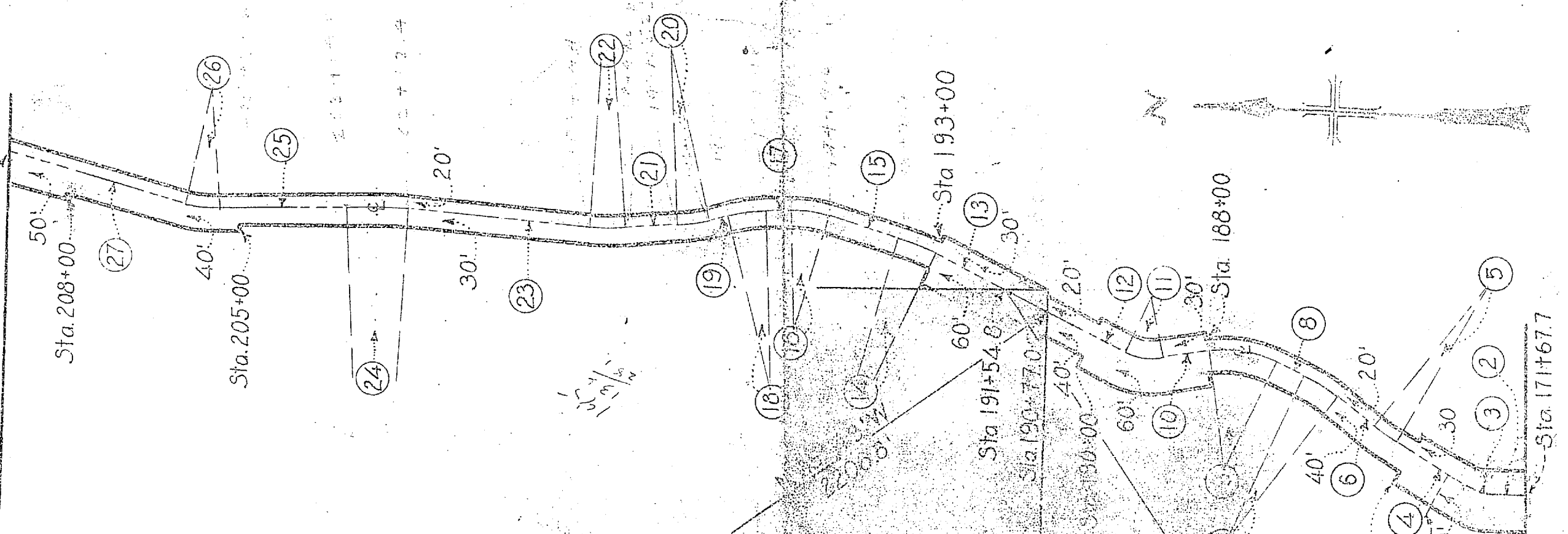
Sta. 171+67.7

N ^o	COURSE	LENGTH	RAD.	TAN.	Δ R ^o R ^L
1.					
2.	N 0° 31 1/2' E	69.7			
3.		6.2	12.5	3.5	28° 00 1/2' R
4.	N 28° 32' E	166.6			
5.		48.3	300.0	24.2	9° 13 1/2' R
6.	N 37° 45 1/2' E	81.6			
7.		68.7	300.0	34.5	13° 07 1/2' L
8.	N 24° 38' E	50.0			
9.		116.0	200.0	59.7	33° 14' L
10.	N 8° 36' W	83.6			
11.		61.5	100.0	31.8	35° 15' R
12.	N 26° 59' E	136.1			
13.	N 26° 39' E	145.6			
14.		70.7	400.0	35.4	10° 06 1/2' L
15.	N 16° 30 1/2' E	120.9			
16.		66.1	200.0	34.4	19° 30 1/2' L
17.	N 3° 00' W	45.1			
18.		68.3	300.0	33.3	12° 40' L
19.	N 15° 40' W	27.4			
20.		55.7	300.0	28.4	10° 50 1/2' R
21.	N 4° 49 1/2' W	86.3			
22.		60.4	400.0	30.3	2° 39 1/2' R
23.	N 3° 50' E	302.0			
24.		102.4	000.0	51.2	5° 52' L
25.	N 2° 02' W	215.8			
26.		58.0	200.0	29.2	16° 58' R
27.	N 14° 36' E	327.8			



KEY MAP

N 55° 54' E
1500.3'



STATE OF UTAH
A part of N.W⁴ Sec. 3
T6N, R1W, S1M.
Total 3.69 Acres

DEPARTMENT OF THE INTERIOR
BUREAU OF RECLAMATION
OGDEN RIVER PROJECT - UTAH
RIGHTS OF WAY
OGDEN BRIGHAM CANAL
DRAWN: C.M.A. SUBMITTED: _____
TRACED: L.W.R. RECOMMENDED: _____
CHECKED: C.M.A. APPROVED: _____
Scale: 1" = 200 ft. 4-1D-111 Ogden, Utah 1-4-34